



A new platform to organize and promote the global mitochondrial research community

Alexander J Sercel¹, Douglas C Wallace², Anu Suomalainen³, Michael P Murphy⁴, Navdeep Chandel^{5,6}, Kyrie Wilson^{1,7} and Gordon Freedman¹

¹MitochondriaWorld, National Laboratory for Education Transformation, Oakland, CA, USA

²Center for Mitochondrial and Epigenomic Medicine, The Children's Hospital of Philadelphia, Philadelphia, PA, USA

³Stem Cells and Metabolism, Faculty of Medicine, University of Helsinki, Helsinki, Finland

⁴MRC-Mitochondrial Biology Unit, The Keith Peters Building, University of Cambridge, Cambridge, CB2 0XY, UK

⁵Division of Pulmonary and Critical Care Medicine, Department of Medicine, Northwestern University, Chicago, IL, USA

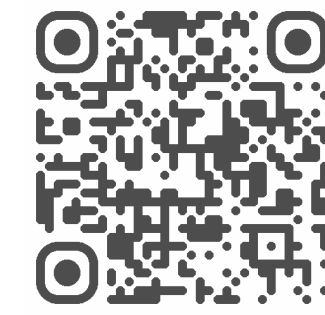
⁶Biochemistry and Molecular Genetics, Northwestern University, Chicago, IL, USA

⁷Department of Ophthalmology, Medical University of South Carolina, Charleston, SC, USA

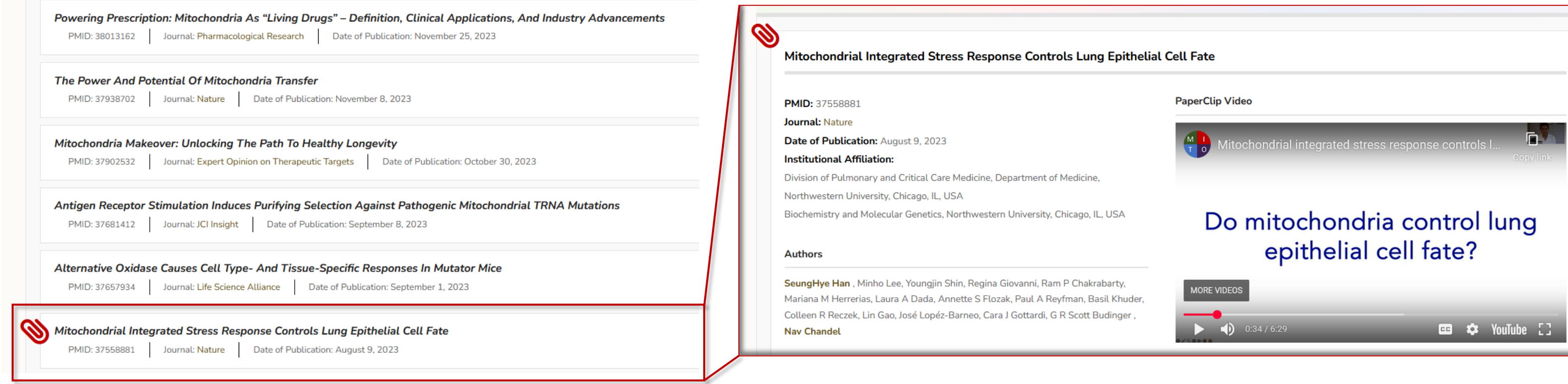
MitoWorld Tools and Resources

MitoPapers

- MitoWorld community members submit their published research articles to be featured on the site along with a 3-5 minute video called a **PaperClip** summarizing and contextualizing their work for a broad audience.
- Researchers and the public can browse uploaded MitoPapers and easily digest novel findings by watching PaperClips, and trainees can share links to their posted PaperClips to demonstrate their science communication skills

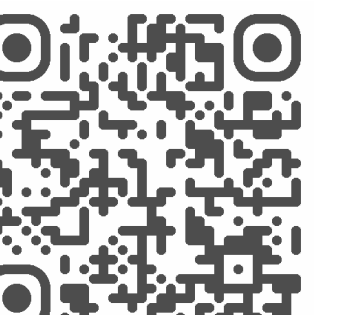


SUBMIT YOUR MITO PAPER HERE



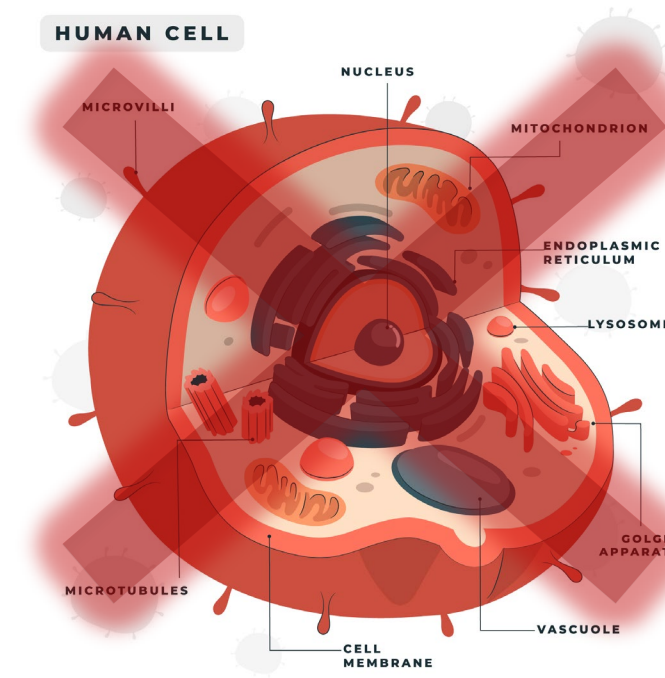
MitoGuide

- Mitochondrial biology primer for public audiences and researchers new to the field of mitochondria produced as a living document and updated to reflect new advances.
- Commissioning original visuals and animations to accurately illustrate mitochondrial morphology, dynamics, and metabolism
- Consistently updating to reflect consensus, controversies and new methods for comprehending



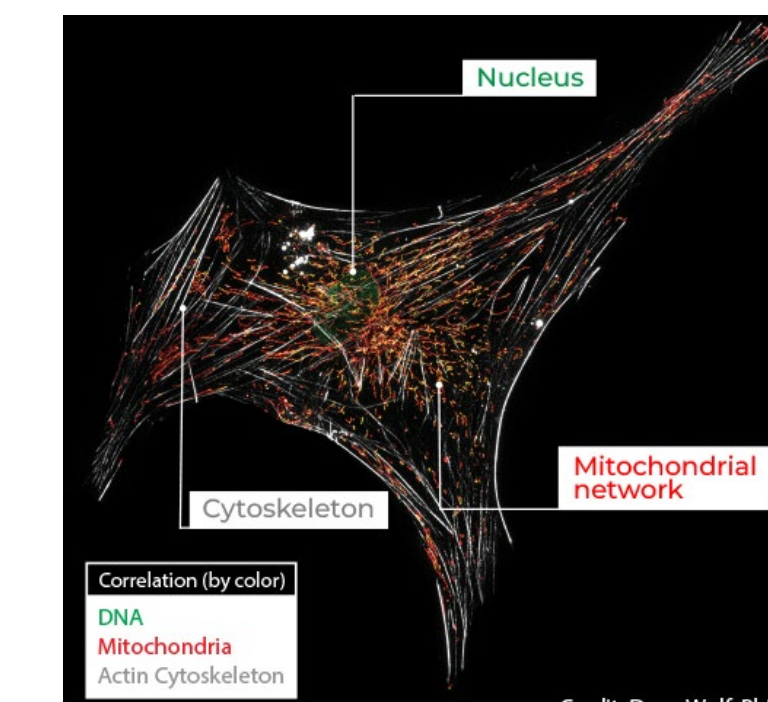
MITOGUIDE ACCESS

"Traditional" cell model:



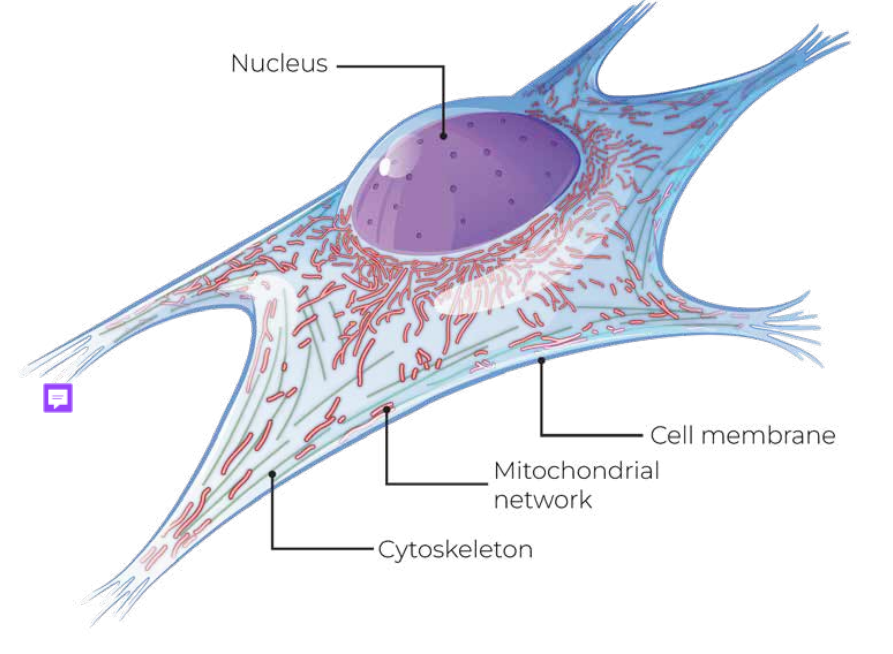
The well-known textbook cell model depicts mitochondria as static jellybean-shaped organelles sparsely distributed throughout the cell.

REAL cell image:



NEW cell model illustrating sprawling morphology of the mitochondrial network (labeled red) as seen in a human skin fibroblast cell imaged using fluorescence microscopy.

MitoWorld Animation: Mitochondria network



We present an updated cell model more accurately illustrating the branching morphology of the mitochondrial network, showing the diversity of long, fused mitochondria along with short, punctate mitochondria within the cell.

MitoNews and Newsletter

Feed of curated and original news articles highlighting:

- Research Breakthroughs
- Upcoming Events
- Clinical Trial Results
- Biotech News
- Patient Spotlights

MitoEvents

Conferences:

- Feed of upcoming mitochondria and metabolism conferences
- featuring members of the MitoWorld community who are organizing or speaking at each event

Calendar

- Lists of upcoming online seminar series with access links submitted by MitoWorld community members

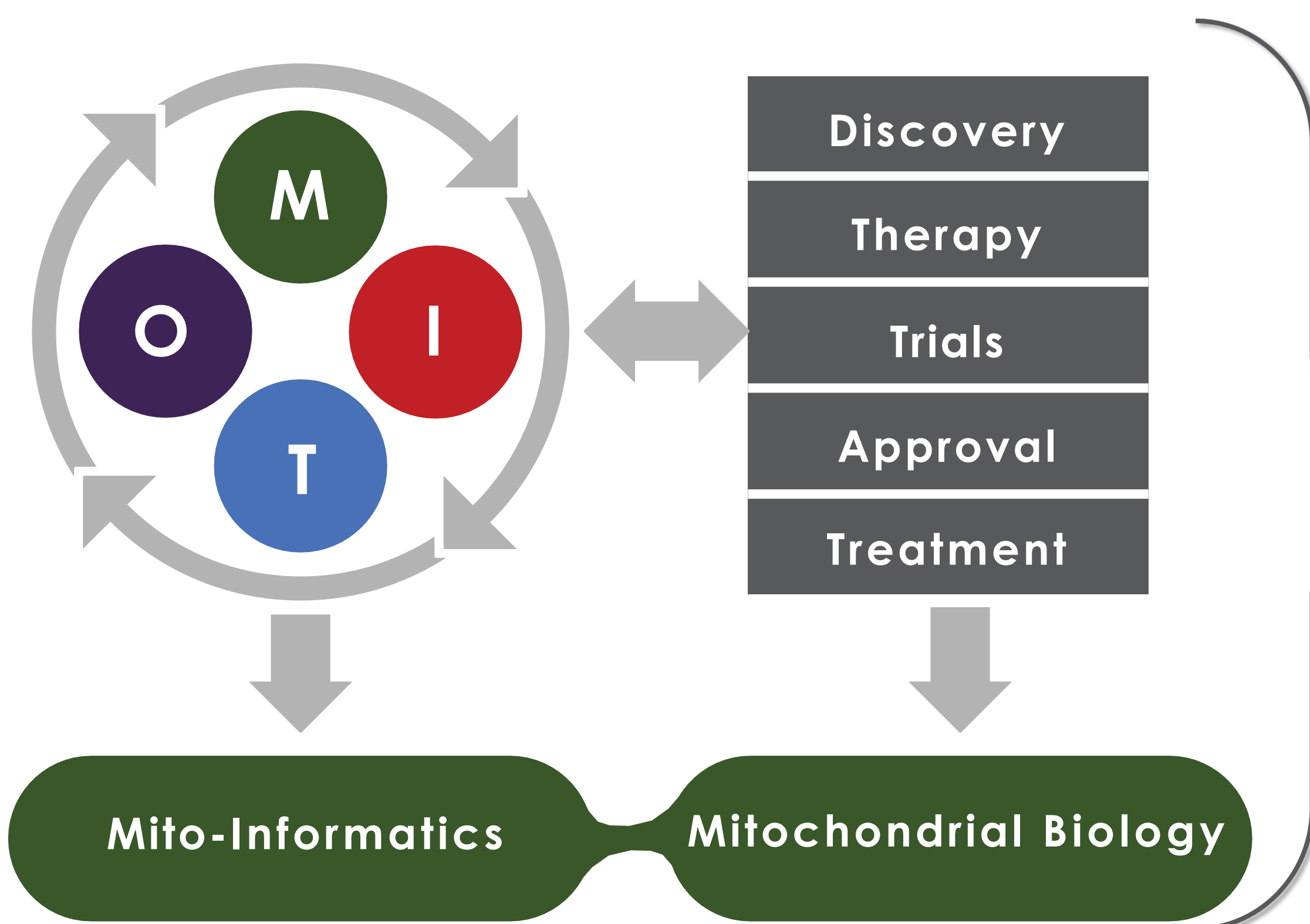
MitoWorld Map

Curating and organizing a central data base of:

- Mitochondrial Investigators
- Clinicians
- Research Institutes
- Clinical Organizations
- Companies
- Core Facilities

Submit questions, news, events & other information to: info@mitoworld.org

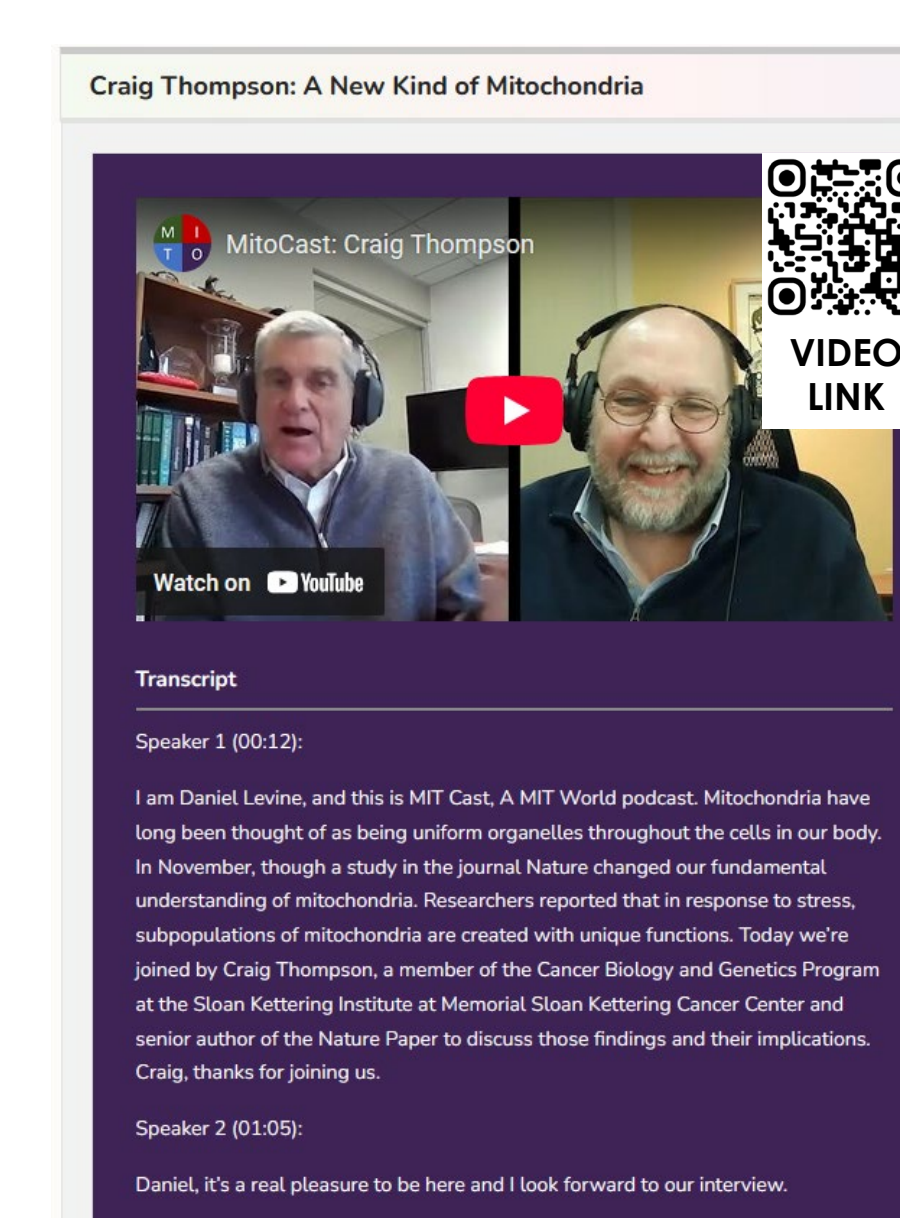
MitoWorld Logic Model



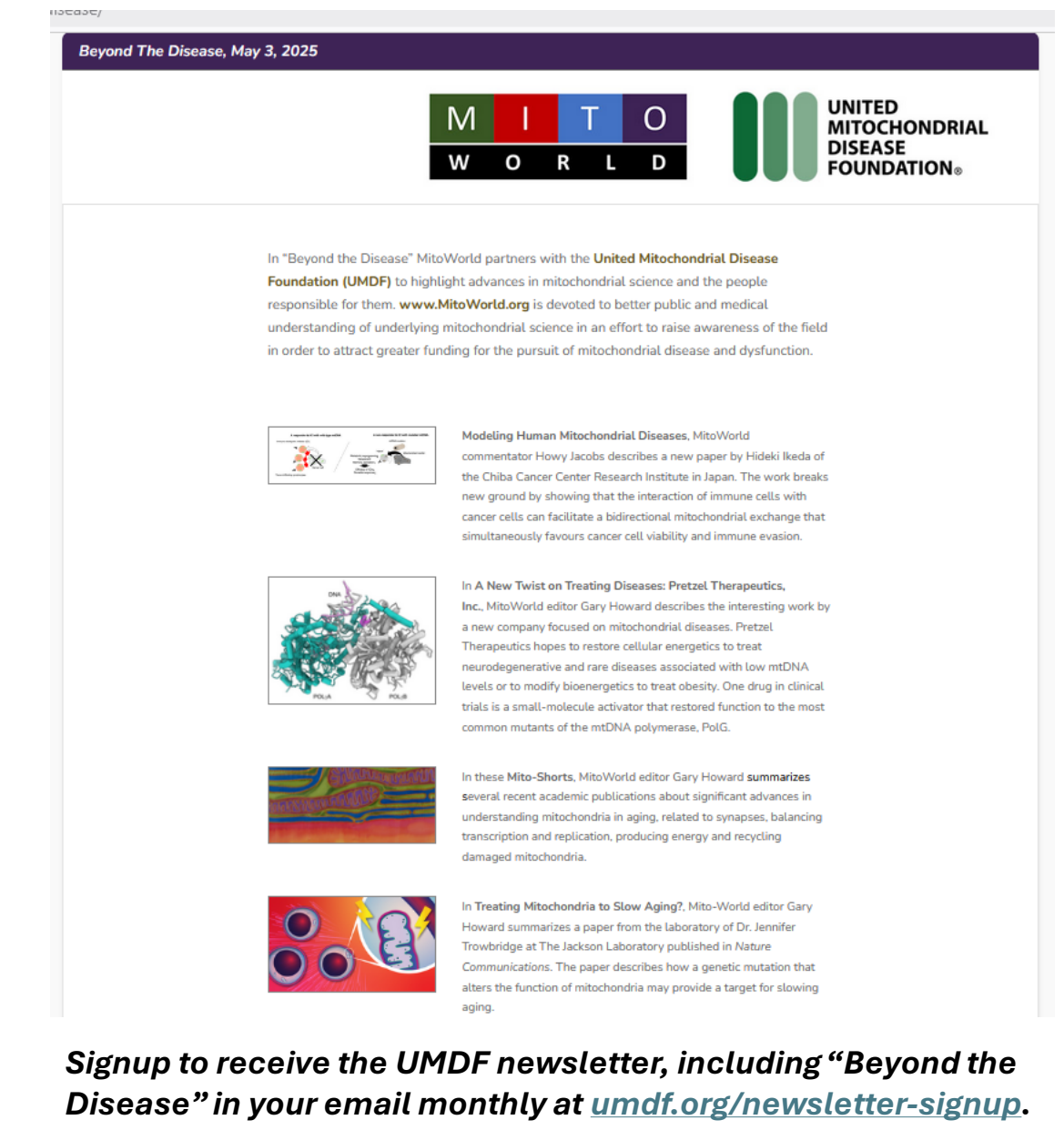
Weekly Blogs



Spotlight Interviews



Monthly Newsletter: Beyond the Disease



Mediating

Connecting patients with clinicians/researchers

Patients

- ✓ Publishing and updating the live MitoGuide to provide accurate and digestible resources about mitochondrial diseases, dysfunctions and therapeutic options
- ✓ Curating and publishing original MitoNews articles focused on advances in mitochondrial biology and medicine
- ✓ Publishing interviews with scientists and clinicians aimed to inform patients/families/caregivers

Researchers

- ✓ Promoting and organizing upcoming events, including conferences, interviews and web seminars on an online calendar
- ✓ Hosting MitoPapers to fuel cross-disciplinary science, promote research findings and encourage collaboration and data sharing
- ✓ Posting curated lists of recent literature
- ✓ Maintaining a mitochondria research library of curated classic papers

Informing

Delivering research updates and industry news

Patients

- ✓ Providing connections with advocacy organizations and registries
- ✓ Working with investigators, clinicians and industry to host a directory of clinical studies and maintain a recent list of links to relevant recruiting clinical trials
- ✓ Hosting and maintaining the MitoWorld Map to help patients find accessible clinicians

Researchers

- ✓ Developing research forums to build community across institutions and among investigators and trainees
- ✓ Hosting job listings to connect trainees with mitochondrial expertise to postdoctoral and industry positions
- ✓ Connecting investigators to patients, registries, biotech/pharma and regulators through partnerships to advance research to the clinic

Transmitting

Broadcasting events, insights, and media

Patients

- ✓ Encouraging and facilitating dialogue across patient groups to help grow their communities and reach
- ✓ Enabling greater transparency and enhancing outreach for patient registries
- ✓ Directing patients to upcoming informational and advocacy events
- ✓ Providing an updated set of curated resources of use to all patient groups

Researchers

- ✓ Establishing subject matter task forces to connect and organize investigators around key topics in mitochondrial biology
 - ✓ Primary mitochondrial diseases
 - ✓ Immunometabolism
 - ✓ Mitochondria in aging
 - ✓ Consensus and controversies
- ✓ Hosting annual focus area symposia to drive and organize collaborative science within domains

Orchestrating

Coordinating multi-stakeholder outreach efforts

Patients

- ✓ Raising awareness for primary and secondary mitochondrial diseases among the public, funders and non-specialist physicians
- ✓ Developing educational materials to explain mitochondrial biology to patients and their families
- ✓ Providing information and resources to help patients communicate with their doctors about their symptoms and disease progression

Researchers

- ✓ Raising awareness for the role of mitochondria in fundamental biology and disease processes among the general public
- ✓ Interacting with large-scale philanthropic groups to develop greater support and funding for mitochondrial research
- ✓ Curating and maintaining lists of mitochondrial research resources and databases in a central location for the community

Partners

Acknowledgements

Advisory Board

