



Alexander J Sercel¹, Douglas C Wallace², Anu Suomalainen³, Michael P Murphy⁴, Navdeep Chandel^{5,6}, and Gordon Freedman¹

¹MitochondriaWorld, National Laboratory for Education Transformation, Oakland, CA, USA

²Center for Mitochondrial and Epigenomic Medicine, The Children's Hospital of Philadelphia, Philadelphia, PA, USA

³Stem Cells and Metabolism, Faculty of Medicine, University of Helsinki, Helsinki, Finland

⁴MRC-Mitochondrial Biology Unit, The Keith Peters Building, University of Cambridge, Cambridge, CB2 0XY, UK

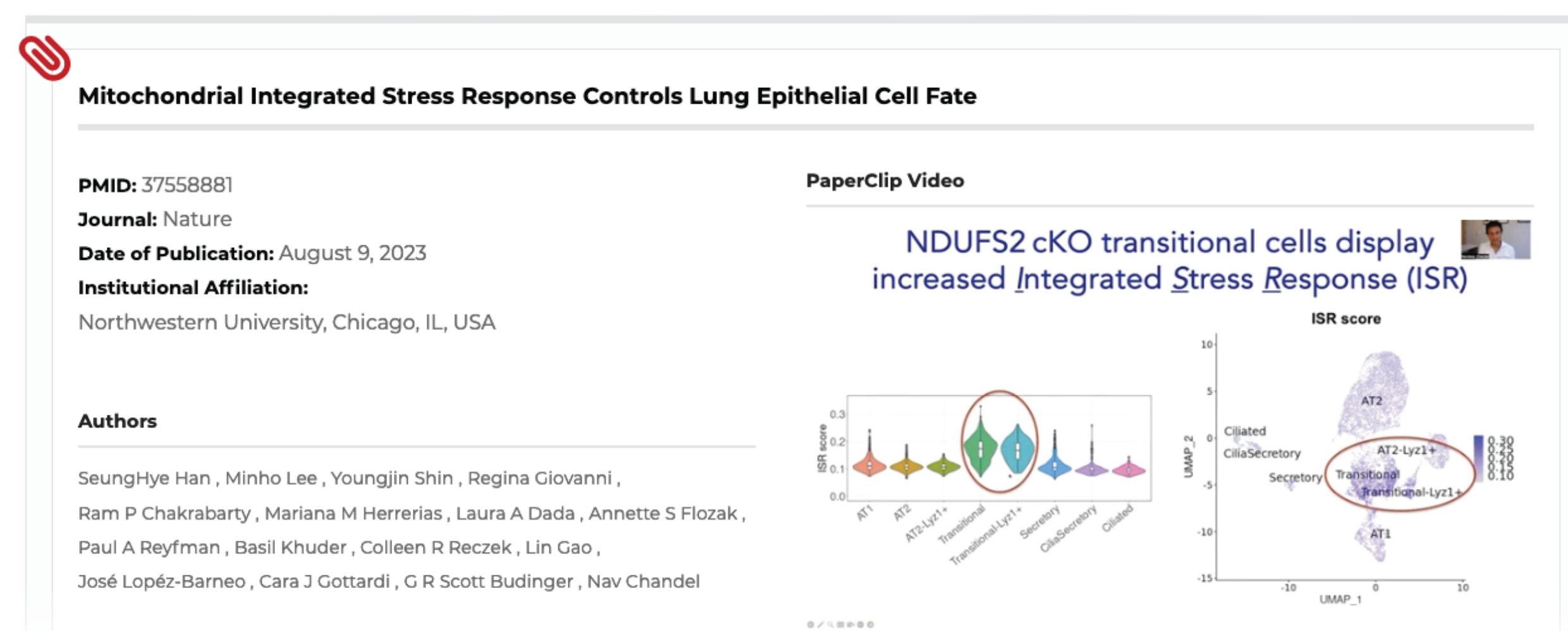
⁵Division of Pulmonary and Critical Care Medicine, Department of Medicine, Northwestern University, Chicago, IL, USA

⁶Biochemistry and Molecular Genetics, Northwestern University, Chicago, IL, USA

MitoWorld Tools and Resources

MitoPapers

- MitoWorld community members submit their published research articles to be featured on the site along with a 3-5 minute video called a **PaperClip** summarizing and contexting their work for a broad audience.
- Researchers and the public can browse uploaded MitoPapers and easily digest novel findings by watching PaperClips, and trainees can share links to their posted PaperClips to demonstrate their science communication skills



MitoNews and Newsletter

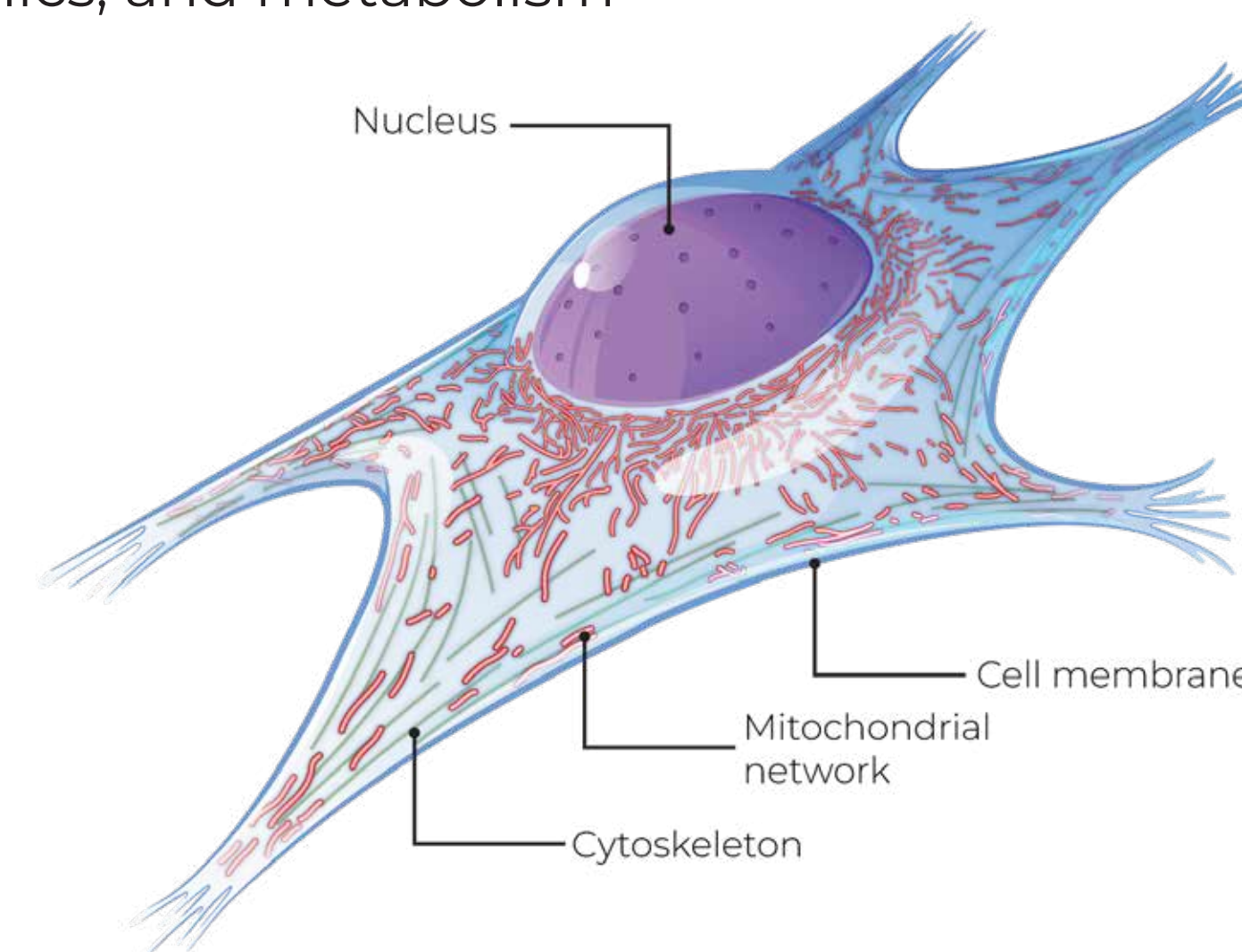
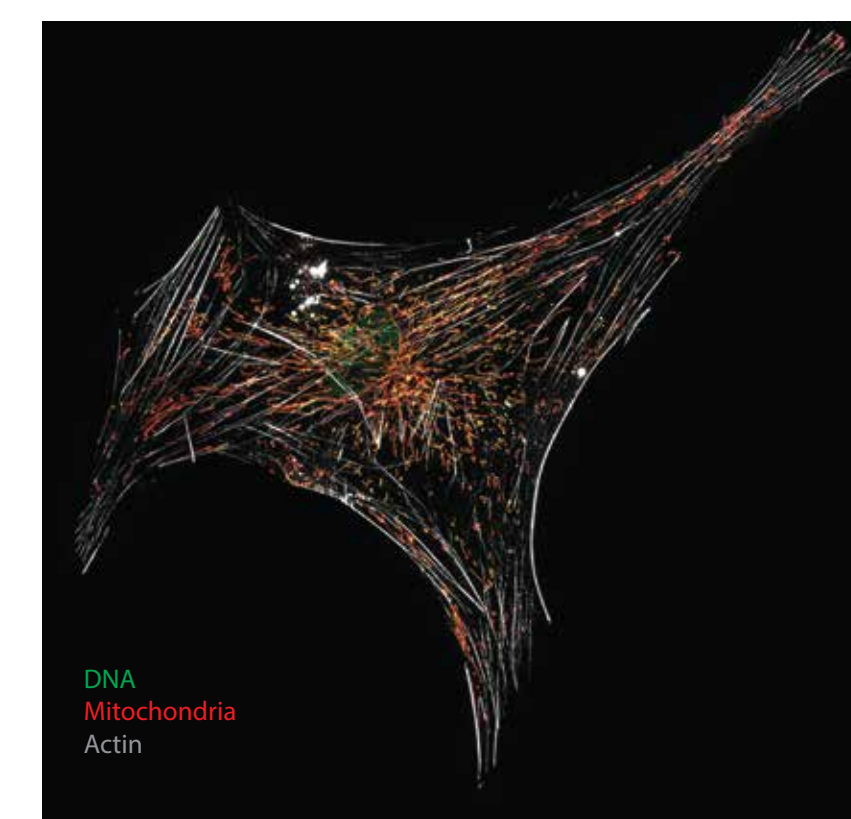
- Feed of curated and original news articles highlighting Research Breakthroughs, Upcoming Events, Clinical Trial Results, Biotech News, and Patient Spotlights
- Feature on community submitted mitochondrial microscopy
- Live updated news page with monthly newsletter

Events

- Feed of upcoming mitochondria and metabolism conferences featuring members of the MitoWorld community who are organizing or speaking at each event
- Calendar listing upcoming online seminar series along with access links submitted by MitoWorld community members

MitoGuide

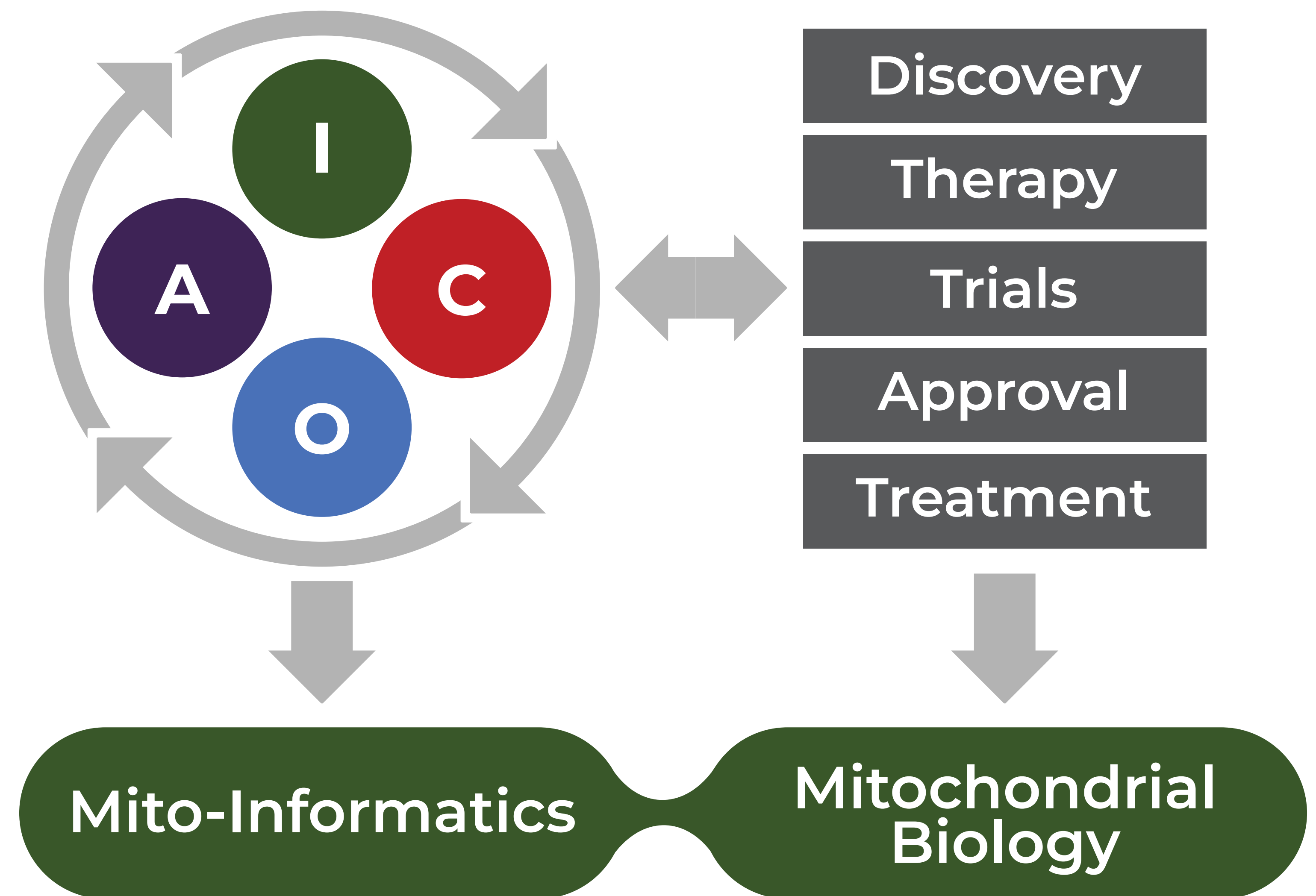
- Mitochondrial biology primer for the general public produced as a living document and updated to reflect new advances.
- Commissioning original visuals and animations to accurately illustrate mitochondrial morphology, dynamics, and metabolism



MitoWorld Map

- Curating and organizing a central data base of mitochondrial Investigators, Clinicians, Research Institutes, Clinical Organizations, Companies, and Core Facilities

MitoWorld Logic Model



Informing

Researchers

- Promoting and organizing upcoming **Events** including **web seminars** on an online calendar
- Hosting **MitoPapers** to fuel cross-disciplinary science, promote the work of trainees, and encourage collaboration
- Posting curated lists of **recent literature**
- Maintaining a **Mitochondria Research Library** of curated classic papers

Patients

- Publishing and updating the live **MitoGuide** to provide accurate and digestible resources about mitochondrial diseases, dysfunctions and therapeutic options.
- Curating and publishing original **MitoNews** articles focused on advances in mitochondrial biology and medicine.
- Publishing **interviews with scientists and clinicians** aimed to inform patients and their families.

Connecting

Researchers

- Developing **research forums** to build community across institutions and among investigators and trainees.
- Hosting **job listings** to connect trainees with mitochondrial expertise to postdoctoral and industry positions
- Connecting **investigators to patients registries, biotech/Pharma, and regulators** through partnerships to advance research into the clinic

Patients

- Providing connections with advocacy organizations and **registries**
- Working with investigators, clinicians, and industry to host a directory of **clinical studies** and maintain a recent list of links to relevant recruiting **clinical trials**
- Hosting and maintaining the **MitoWorld Map** to help patients find accessible clinicians

Organizing

Researchers

- Establishing subject matter **Task Forces** to connect and organize investigators around key topics in mitochondrial biology
 - Primary Mitochondrial Disease
 - Immunometabolism
 - Neurobiology
 - Aging
 - Others to be defined
- Hosting annual **Focus Area Symposia** to drive and organize collaborative science within domains

Patients

- Encouraging and facilitating **dialog across patient groups** to enhance help grow their communities and reach
- Enabling greater transparency and enhancing outreach for patient registries
- Directing patients to upcoming informational and advocacy events
- Providing an updated set of **curated resources** of use to all patient groups

Advocating

Researchers

- Raising awareness** for the role of mitochondria in fundamental biology and disease processes among the general public
- Interacting with large-scale philanthropic groups to **develop greater support** and funding for mitochondrial research
- Curating and maintaining and list of **mitochondrial research resources** and databases in a central location for the community

Patients

- Raising awareness** for primary and secondary mitochondrial diseases among the public, funders, and non-specialist physicians
- Developing **educational materials** to explain mitochondrial biology to patients and their families
- Providing information and **resources** to help patients **communicate with their doctors** about their symptoms and disease progression

Partners



Acknowledgements

